



# Livingston County Skywarn Net Procedures



# Outline

- SKYWARN Nets
- Net Conditions (GREEN, YELLOW, RED)
- What to Report
- How to Communicate to Net Control
- How to Report
- Call Out List
- Where to Get Weather Info



# SAFETY FIRST

- Always make sure you and your family are **SAFE** first!
- Lightening can get you inside your Shack!
- Report Only when it is **SAFE** to do so!

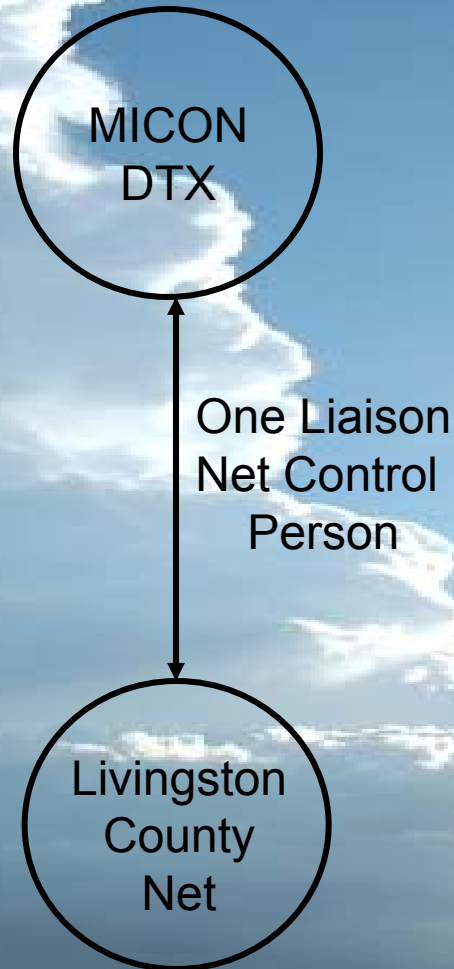


# SKYWARN NETS

- MICON – DTX NWS White Lake
- 17 County CWA
- Key Station Concept
  - One liaison to each of the 17 counties
  - Each county has a local net

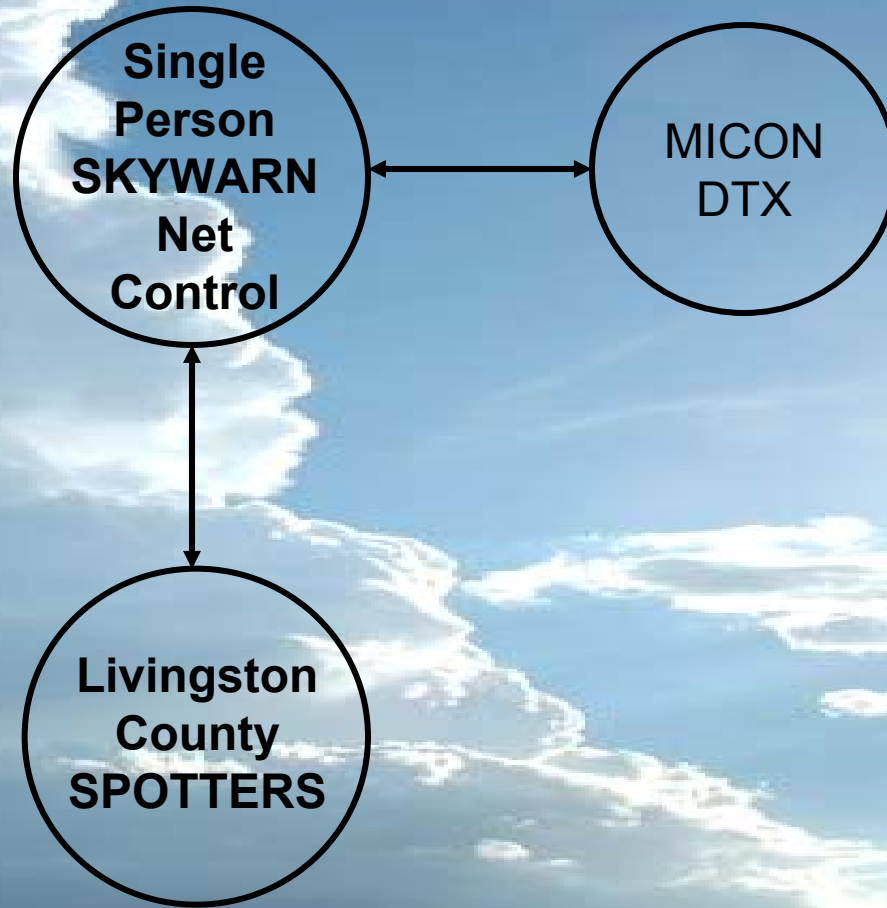


# SKYWARN NETS



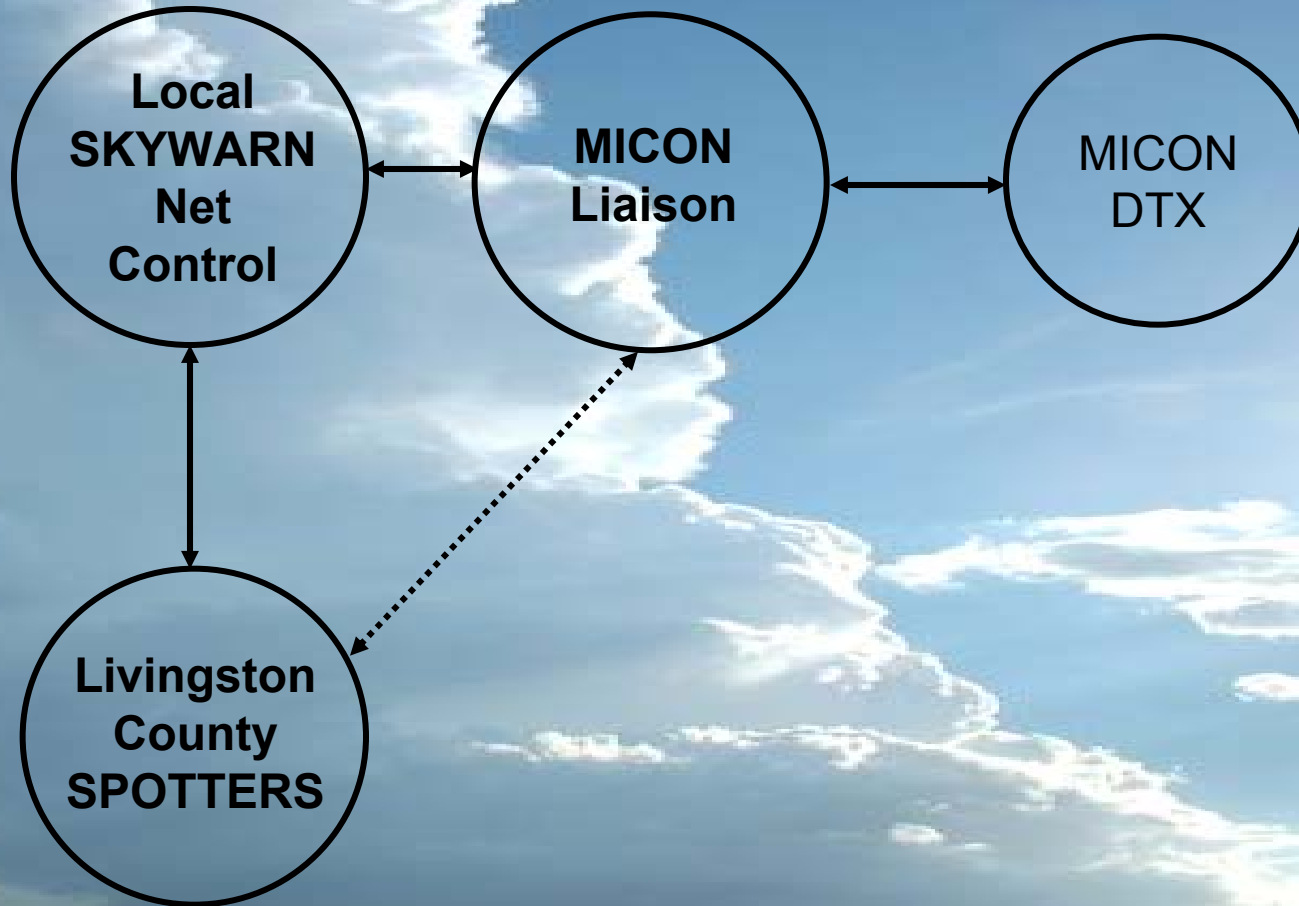


# SKYWARN NETS





# SKYWARN NETS





# SKYWARN NET

- **PRIMARY FREQUENCY: 146.680 (162.2Hz PL)**
- **BACKUP FREQUENCY #1: 145.410 (162.2Hz PL)**
- **BACKUP FREQUENCY #2: 146.680 (Simplex)  
or 144.320 (Simplex)**



# SKYWARN NET

- **No SKYWARN Net**
  - **Severe Weather Only!**
    - **1-800-808-0006**
  - **Non Severe Weather**
    - **e-spotter – [espotter.weather.gov](http://espotter.weather.gov)**



# Net Check-in/Check Out



- Net Check-In
  - Your Call Sign Phonetically
  - Your Location
- Net Check-Out
  - PLEASE Let the Net Control you are leaving
  - Even if you are just stepping away for a few minutes

# Standby Condition Green

**Severe Thunderstorm Watch**

**or**

**Tornado Watch**

No Threatening Weather Near Livingston County

- Repeater in Sky Warn Mode (Courtesy Tone CW “SW”)
- Repeater can be used with out net control permission.
- Keep transmissions short and leave long pauses between transmissions

# Condition Green

## Approaching Severe Storm

- **Severe Thunderstorm Watch or Tornado Watch**
- **This is a semi-directed net. (It is up to net control to determine if the net is DIRECTED or STANDBY)**
- **All stations please check in by stating your call sign phonetically, followed by your location**
- **When the net is in stand-by, transmissions may be made without net control's permission.**
- **All transmissions should remain short with long pauses for emergency traffic.**
- **If weather conditions worsen the net will be upgraded as required.**

# Condition Yellow

**Severe Storm approaching county line**

**or**

**Warning in adjacent county**

- **This NET is a Directed Net and no transmissions will be made without net controls permission.**
- **Will take traffic only if it is a matter of life or death**
- **Check-ins ONLY when requested by net control.**
- **Please keep all communications brief and concise.**
- **If weather conditions change, the net will be upgraded or downgraded as required**

# Condition Yellow

## Accepted Reports

- **HAIL:** Diameter: (pea, M&M, dime, ...)
- **DAMAGING WINDS:** Speed (40 and above), Direction (Estimated or Measured)
- **TORRENTIAL RAIN:** Greater than 1" Per Hour
- **FLOODING:** Water over the curbs  
(Especially in places that normally don't flood)
- **FUNNEL CLOUDS:** Location, direction and speed
- **TORNADOES:** Location, direction and speed  
visible damage or debris

# Condition Red

**Severe Thunderstorm Warning**

**or**

**Tornado Warning**

- **This NET is a Directed Net and no transmissions will be made without net controls permission.**
- **We will take traffic if it is a matter of life or death ONLY**
- **check-ins ONLY when requested by net control**
- **If weather conditions change, the net will be downgraded as required.**





# What to Report

## Wind Gusts of 40 MPH or Greater

- 25-31 Large branches in motion; whistling heard in telephone wires
- 32-38 Whole trees in motion; inconvenience felt in walking against the wind
- **39-54** Twigs break off trees; wind generally impedes progress
- **55-72** Damage to chimneys, TV antennas; pushes over shallow rooted trees
- **73-112** Peels surfaces off roofs; windows broken; light mobile homes overturned; moving cars pushed off road
- **113-157** Roofs torn off houses; cars lifted off ground



# What to Report



## Hail

Pea	0.25 - .375 in
Plain M&M	0.50 in
<b>Penny</b>	<b>0.75 in</b>
<b>Nickel</b>	<b>0.88 in</b>
<b>Quarter</b>	<b>1.00 in</b>
<b>Half dollar</b>	<b>1.25 in</b>
<b>Ping Pong Ball</b>	<b>1.50 in</b>
<b>Golf ball</b>	<b>1.75 in</b>
<b>Lime</b>	<b>2.00 in</b>
<b>Tennis Ball</b>	<b>2.50 in</b>
<b>Baseball</b>	<b>2.75 in</b>
<b>Large Apple</b>	<b>3.00 in</b>
<b>Softball</b>	<b>4.00 in</b>
<b>Grapefruit</b>	<b>4.50 in</b>
<b>CD/DVD</b>	<b>4.75 – 5.00 in</b>



# What to Report

- **Funnel Clouds**
- **Tornados**

## NOTE:

Wall clouds are no longer reported. You should watch them and report Funnels or Tornados that form from them.



# What to Report

- **HEAVY OR TORRENTIAL RAIN:**  
Greater than 1” per hour
- **FLOODING** Water over the curbs  
(Especially in places that normally don't flood)
- **Post Storm Damage**



# How to Communicate with Net Control



- Get permission to transmit  
“Net control KD8CCR”  
(Wait until net control recognized you!)
- Net control gives you permission to transmit  
“KD8CCR Go Ahead”
- Transmit Severe Weather Data  
“Net control at 11:34pm I have Quarter size Hail and  
Estimated 50mph Wind at M59 and Grand River  
KD8CCR”
- Net control acknowledges transmission  
“KD8CCR copy W8KDR Livingston County Net Control”



# How to Report

## Time – Event – Location (TEL)

- **Time:**
  - Local Time that the event happened
  - If this is a damage report best estimate of time
- **Event:**
  - What is the Severe Weather or Damage
  - Use common terminology
  - Is the information **Measured or Estimated**
- **Location:**
  - Major Cross Roads
  - Lat and Long  
(Preferred Lat/Long Format ddd.dd - example **42.62° N 83.95° W** )



# How to Report

- **Severe Weather Reports**
  - Report as soon as safely possible
- **Damage Reports**
  - Report After the storm has passed or the net level is not Yellow or Red
  - Ask if Net control if he is taking damage reports
  - Use e-Spotter



# Call Out List



- Trained Spotters
- We would like to know when we can call you to get spotters activated in areas that are needed.
- Please Sign up for your call times



# Where to get Weather Info



- Local Skywarn Net 146.680
- Weather Radio
- Internet
  - [www.crh.noaa.gov/dtx](http://www.crh.noaa.gov/dtx)
  - [www.wunderground.com](http://www.wunderground.com)
  - [adds.aviationweather.gov](http://adds.aviationweather.gov)



# NWS White Lake



NOAA's National Weather Service Weather Forecast Office

## Detroit/Pontiac, MI

Home Site Map News Organization

Local forecast by "City, St" or Zip Code

City, St

### Current Hazards

- Watches / Warnings
- Outlooks
- U.S. Hazards
- Hurricane Info
- NOAA Watch
- Winter Hazards
- Snowfall Forecast
- Submit a Report

### Current Conditions

- Observations
- Satellite Images
- Rivers & Lakes AHPS
- Precip Estimate
- Snow Cover
- Drought Monitor

### Radar Imagery

- Local Radar
- Nationwide

### Forecasts

- Local Area
- Aviation
- Marine
- Fire Weather
- Graphical
- Weather Planner

### Rivers / Hydrology

- AHPS / River Info

### Top News of the Day

- Snow in Southeast Michigan from Mid April and Later**
- Spotter Training Scheduled Across Southeast Michigan...Next Training Classes in Saginaw April 12th...Pontiac April 14th**

Click on the map below for the latest forecast.



Last map update: Thu, Apr. 12, 2007 at 12:55:09 pm EDT

[Read watches, warnings & advisories](#)



- [Small Craft Advisory](#)
- [Short Term Forecast](#)
- [Hazardous Weather Outlook](#)



## Today in Southeast Michigan Weather History...

On April 12, 1976, the overnight temperature dropped to 18 degrees in Detroit, which is the record low temperature for the day. The very next year, in 1977, the daytime temperature rose to 89 degrees, which is the record high temperature for the day!



# Local NWS Forecast













Your **National Weather Service** forecast


## Lansing, MI

Enter Your "City, ST" or zip code

NWS Grand Rapids, MI [En Español](#)  
**Point Forecast:** Lansing, MI **Last Update:** 10:05 am EDT Apr 12, 2007  
 42.71N -84.54W (Elev. 850 ft) **Forecast Valid:** 11am EDT Apr 12, 2007-6pm EDT Apr 18, 2007

### Forecast at a Glance

Today	Tonight	Friday	Friday Night	Saturday	Saturday Night	Sunday	Sunday Night	Monday
								
80%	30%			30%				
Rain/Snow	Chance Snow	Breezy	Mostly Cloudy	Chance Rain/Snow	Slight Chc Sprinkles/Flurries	Mostly Cloudy	Mostly Cloudy	Partly Cloudy
Hi 40°F Lo 29°F	Hi 43°F Lo 29°F	Hi 43°F	Lo 35°F	Hi 47°F	Lo 32°F	Hi 46°F	Lo 33°F	Hi 51°F

### Detailed 7-day Forecast

Hazardous weather condition(s):

**Hazardous Weather Outlook**  
**Short Term Forecast**

**Today:** Occasional rain and snow showers, becoming all snow after noon. High near 40. Breezy, with a west southwest wind between 13 and 21 mph. Chance of precipitation is 80%. Total daytime snow accumulation of less than one inch possible.

**Tonight:** Scattered snow showers. Cloudy, with a low around 29. Breezy, with a west northwest wind around 21 mph. Chance of precipitation is 30%.

**Friday:** Mostly cloudy, with a high near 43. Breezy, with a west northwest wind between 17 and 20 mph.

**Friday Night:** Mostly cloudy, with a low around 35. Northwest wind 15 to 18 mph decreasing to between 5 and 8 mph. Winds could gust as high as 29 mph.

**Saturday:** A chance of rain and snow. Mostly cloudy, with a high near 47. Calm wind becoming northeast between 11 and 14 mph. Winds could gust as high as 26 mph. Chance of precipitation is 30%.

**Saturday Night:** A slight chance of sprinkles and flurries. Mostly cloudy, with a low around 32.

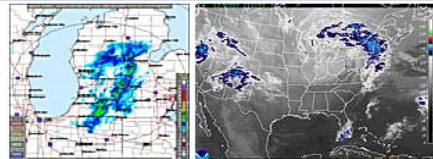
### Current Conditions [\[Move Down\]](#)

**Lansing, Capital City Airport**  
 Lat: 42.78 Lon: -84.6 Elev: 840.879  
 Last Update on Apr 12, 9:53 am EDT

<b>Humidity:</b>	89 %
<b>Wind Speed:</b>	SW 13 MPH
<b>Barometer:</b>	29.43" (997.3 mb)
<b>Dewpoint:</b>	34°F (1°C)
<b>Wind Chill:</b>	29°F (-2°C)
<b>Visibility:</b>	8.00 mi.
<b>More Local Wx:</b>	<a href="#">3 Day History</a>


**Light Rain**  
37°F (3°C)

### Radar and Satellite Images



### Detailed Point Forecast [\[Move Up\]](#)

Click Map for Forecast





# Local NWS Forecast



Your National Weather Service forecast

## Lansing, MI



Enter Your "City, ST" or zip code

Go

NWS Grand Rapids, MI

[En Español](#)

**Point Forecast:** Lansing, MI  
42.71N -84.54W (Elev. 850 ft)

**Last Update:** 10:05 am EDT Apr 12, 2007

**Forecast Valid:** 11am EDT Apr 12, 2007-6pm EDT Apr 18, 2007

### Forecast at a Glance

Today	Tonight	Friday	Friday Night	Saturday	Saturday Night	Sunday	Sunday Night	Monday
								
80%	30%			30%				
Rain/Snow	Chance Snow	Breezy	Mostly Cloudy	Chance Rain/Snow	Slight Chc Sprinkles/Flurries	Mostly Cloudy	Mostly Cloudy	Partly Cloudy
Hi 40°F	Lo 29°F	Hi 43°F	Lo 35°F	Hi 47°F	Lo 32°F	Hi 46°F	Lo 33°F	Hi 51°F



# Local NWS Forecast



## Detailed 7-day Forecast

Hazardous weather condition(s):

### Hazardous Weather Outlook Short Term Forecast

**Today:** Occasional rain and snow showers, becoming all snow after noon. High near 40. Breezy, with a west southwest wind between 13 and 21 mph. Chance of precipitation is 80%. Total daytime snow accumulation of less than one inch possible.

**Tonight:** Scattered snow showers. Cloudy, with a low around 29. Breezy, with a west northwest wind around 21 mph. Chance of precipitation is 30%.

**Friday:** Mostly cloudy, with a high near 43. Breezy, with a west northwest wind between 17 and 20 mph.

**Friday Night:** Mostly cloudy, with a low around 35. Northwest wind 15 to 18 mph decreasing to between 5 and 8 mph. Winds could gust as high as 29 mph.

**Saturday:** A chance of rain and snow. Mostly cloudy, with a high near 47. Calm wind becoming northeast between 11 and 14 mph. Winds could gust as high as 26 mph. Chance of precipitation is 30%.

**Saturday Night:** A slight chance of sprinkles and flurries. Mostly cloudy, with a low around 32.

**Sunday:** Mostly cloudy, with a high near 46.

**Sunday Night:** Mostly cloudy, with a low around 33.

**Monday:** Partly cloudy, with a high near 51.

**Monday Night:** Mostly clear, with a low around 34.

**Tuesday:** Mostly sunny, with a high near 55.

**Tuesday Night:** Mostly clear, with a low around 38.

**Wednesday:** Partly cloudy, with a high near 58.

## Current Conditions [\[Move Down\]](#)

### Lansing, Capital City Airport

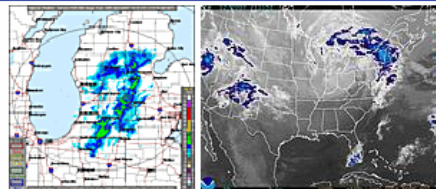
Lat: 42.78 Lon: -84.6 Elev: 840.879  
Last Update on Apr 12, 9:53 am EDT

### Light Rain

37°F  
(3°C)

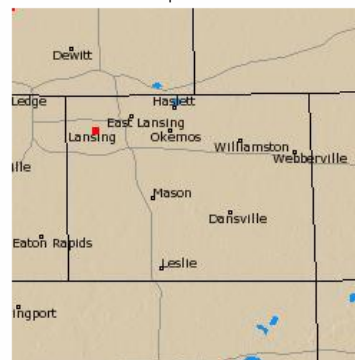
Humidity:	89 %
Wind Speed:	SW 13 MPH
Barometer:	29.43" (997.3 mb)
Dewpoint:	34°F (1°C)
Wind Chill:	29°F (-2°C)
Visibility:	8.00 mi.
More Local Wx:	<a href="#">3 Day History</a>

## Radars and Satellite Images



## Detailed Point Forecast [\[Move Up\]](#)

Click Map for Forecast



Lat/Lon: 42.71 -84.54 Elevation: 850 ft



# NWS

## Hazardous Weather Page



000

FLUS43 KDTX 120828

HWODTX

HAZARDOUS WEATHER OUTLOOK

NATIONAL WEATHER SERVICE DETROIT/PONTIAC MI

428 AM EDT THU APR 12 2007

MIZ047>049-053>055-060>063-068>070-075-076-082-083-130830

MIDLAND-BAY-HURON-SAGINAW-TUSCOLA-SANILAC-SHIAWASSEE- GENESEE-LAPEER- ST.  
CLAIR-LIVINGSTON-OAKLAND-MACOMB-WASHTENAW-WAYNE-LENAWEE-MONROE- 428 AM EDT  
THU APR 12 2007

THIS HAZARDOUS WEATHER OUTLOOK IS FOR SOUTHEAST MICHIGAN.

.DAY ONE...

TODAY AND TONIGHT NO HAZARDOUS WEATHER IS EXPECTED AT THIS TIME.

.DAYS TWO THROUGH SEVEN...

FRIDAY THROUGH WEDNESDAY NO HAZARDOUS WEATHER IS EXPECTED AT THIS TIME.

.SPOTTER INFORMATION STATEMENT...

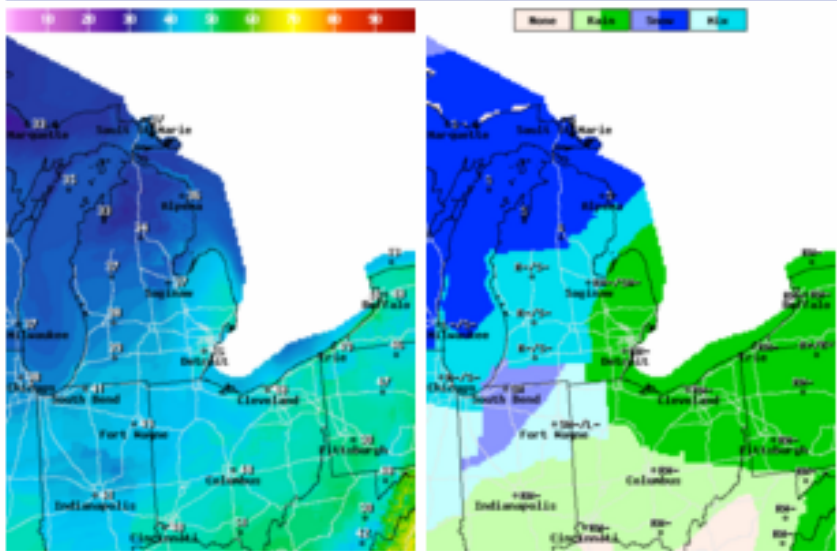
SPOTTER ACTIVATION WILL NOT BE NEEDED TODAY AND TONIGHT.



# Local NWS Forecast



## National Digital Forecast Database



## Additional Forecasts & Information

[Zone Area Forecast for Livingston County, MI](#)

[Air Quality Forecasts](#)

[Printable Forecast](#)      [Text Only Forecast](#)

[Text Forecast \(°C\)](#)      [About Point Forecasts](#)

[Hourly Weather Graph](#)      [Tabular Forecast](#)

[Hazardous Weather](#)      [Forecast Discussion](#)

[Regional Temp/Precip](#)

National Weather Service:  
Detroit/Pontiac --

[Back to previous page](#)

[www.crh.noaa.gov](http://www.crh.noaa.gov)  
[Privacy Policy](#)  
[Disclaimer](#)

Locations within 5 miles of this point include...Brighton MI



# Hazardous Weather



NOAA's National Weather Service Weather Forecast Office  
**Detroit/Pontiac, MI**

Home Site Map News Organization

Local forecast by "City, St" or Zip Code

**Current Hazards**  
 Watches / Warnings  
 Outlooks  
 U.S. Hazards  
 Hurricane Info  
 NOAA Watch  
 Winter Hazards  
 Snowfall Forecast  
 Submit a Report

**Current Conditions**  
 Observations  
 Satellite Images  
 Rivers & Lakes AHPS  
 Precip Estimate  
 Snow Cover  
 Drought Monitor

**Radar Imagery**  
 Local Radar  
 Nationwide

**Forecasts**  
 Local Area  
 Aviation  
 Marine  
 Fire Weather  
 Graphical  
 Weather Planner

**Rivers / Hydrology**  
 AHPS / River Info  
 Flash Floods

**Climate**  
 Local  
 National  
 More...

**Weather Safety**  
 StormReady  
 Preparedness

**Severe Weather Outlook**

No Thunderstorms
Non-Severe Thunderstorms
Slight Chance of Severe Thunderstorms
Chance of Severe Thunderstorms
Severe Thunderstorms Likely

Severe Weather Potential ending at 08 AM Fri Apr 13, 2007

NWS Detroit/Pontiac

Experimental graphic  
 Image last updated:  
 5:17 am Thu Apr 12, 2007



# Watches / Warnings



National Weather Service Detroit/Pontiac, MI

## Severe Weather Summary Page

[Home](#) [Site Map](#) [News](#) [Organization](#)

### Watches, Warnings, Advisories (Click to zoom)



Last map update: Thu, Apr. 12, 2007 at 10:37:10 am EDT

Read watches, warnings & advisories

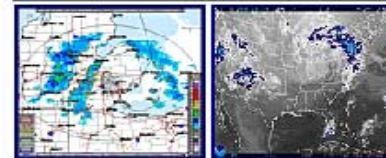
Zoom Out

Small Craft Advisory

Short Term Forecast

Hazardous Weather Outlook

### Radar and Satellite (Click for larger image)



- Tornado Warning(s)**  
None
- Severe Thunderstorm Warning(s)**  
None
- Flash Flood Warning(s)**  
None

### Local Links

<a href="#">Hazardous Weather Outlook</a>	<a href="#">Local Storm Reports</a>
<a href="#">Rivers &amp; Lakes (AHPS)</a>	<a href="#">E-Spotter</a>
<a href="#">Office Home</a>	

### Region - National

<a href="#">Convective Outlooks</a>	<a href="#">Mesoscale Discussions</a>
<a href="#">Current Watches</a>	<a href="#">Storm Reports</a>
<a href="#">Excessive Rainfall</a>	<a href="#">Flood Outlook</a>
<a href="#">U.S. Hazards</a>	<a href="#">Weather Safety</a>
<a href="#">Quantitative Precipitation Forecasts (QPF)</a>	



NOAA's National Weather Service  
 Detroit/Pontiac, MI Weather Forecast Office  
 9200 White Lake Road  
 White Lake, MI 48386  
 248-620-9804

Page Author: DTX Webmaster  
 Web Master's E-mail: [w-dtx.webmaster@noaa.gov](mailto:w-dtx.webmaster@noaa.gov)  
 Page last modified: 11-Apr-2007 2:11 PM UTC

[Disclaimer](#)  
[Credits](#)  
[Glossary](#)

[Privacy Policy](#)  
[About Us](#)  
[Career Opportunities](#)



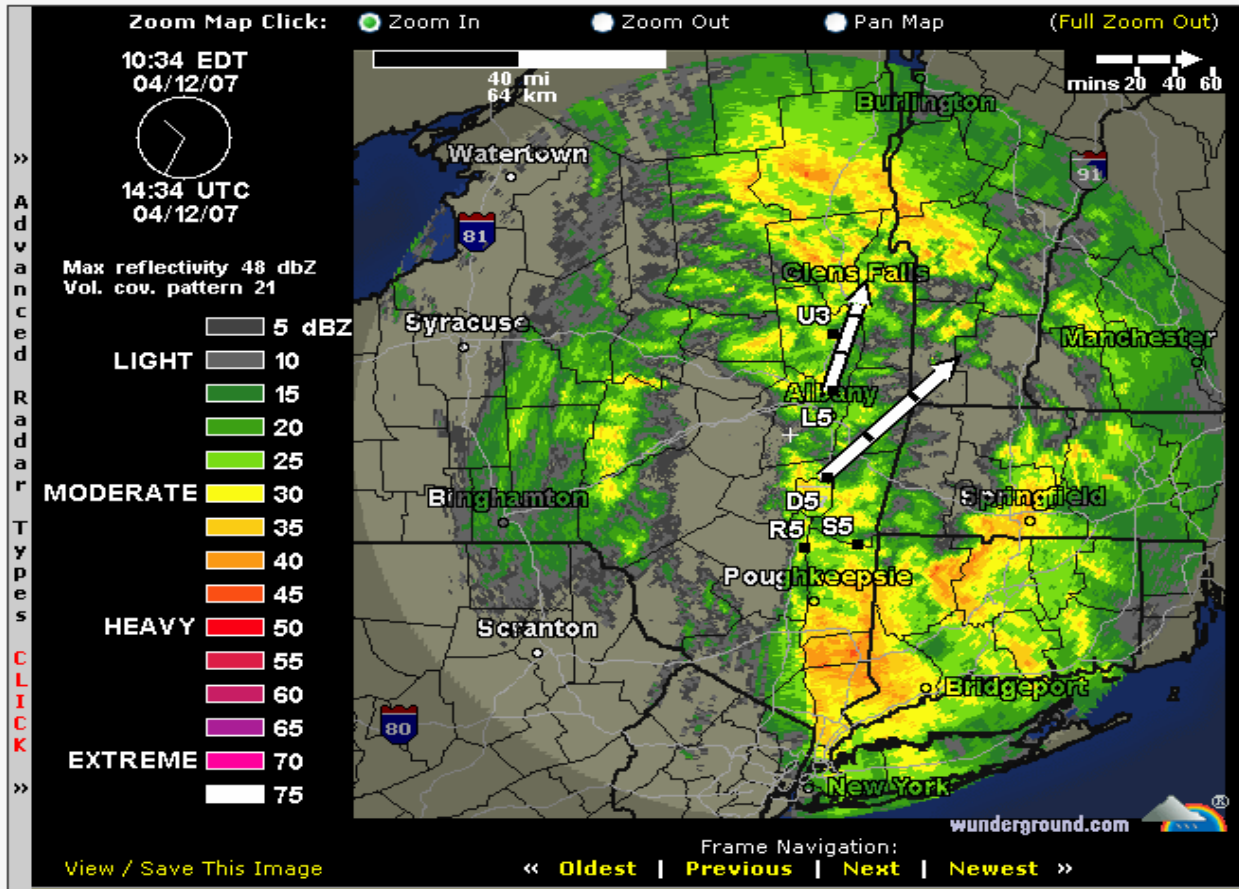
# Weather Underground NEXRAD Radar Page



## NEXRAD Radar

Albany Base Reflectivity 0.50 Degree Elevation Range 124 NMI

[Animate Map](#) [No Tracks](#) [Total Precipitation](#) [Show Severe](#) [Show Conds](#) [Regional Radar](#) [US Radars](#)



**Radar Tip:** Try clicking and dragging on the map above to make a zoom box. Click *Advanced Radar Types* on the left to select scientific radar types.

**Refinance Rates at 5.4% Fixed!**  
\$300,000 mortgage under \$719/mo.  
Get 4 quotes now!  
Bad credit OK!  
[www.lendgo.com](http://www.lendgo.com)

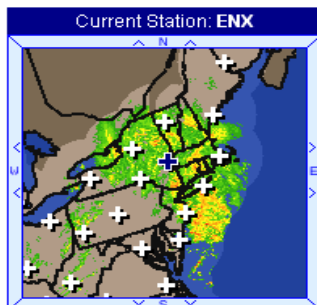
**Trade the US Dollar - 24 hr FOREX trading**  
Advanced trading platform with real-time quotes, plus charts, news and resea...  
[www.forex.com](http://www.forex.com)

**Learn Foreign Currency Trading. Risk Free.**  
Open a practice account and learn how to trade currencies. No risk. No cred...

**Stop Working. Start Your Own Business.**  
You've always dreamed about financial independence. Stop dreaming and take ...



# Weather Underground NEXRAD Radar Page



⊕ = Current Station   ⊕ = Station is Down

### Radar Controls

Animate: 1 Frames   Clutter: Show   Rain/Snow: Hide

Frame Delay: FAST   Storms: 10   Lightning (experimental): Hide

Zoom: 1x   Labels: Show

Remember Settings   **Update Map**

### Radar Archive: **NEW!**



View a 24-hour animated loop for this radar station by selecting a date below. Please note, this image may take a moment to generate. Archive begins April 1st, 2006.

April 12 2007 [View Radar Image](#)

**Get 4 hours (40 frames) of animation plus other great benefits. [Click here to upgrade!](#)**

### NEXRAD Storm Table

▼ = Tornado Vortex Signature   ◆ = Mesocyclone   ■ = Hail Storm

ID	Max	Top	VIL	Chance of Severe Hail	Chance of Hail	Max Hail Size	Speed	Direction (from)
L5	47 dBZ	5,000 ft.	3 kg/m <sup>2</sup>	0%	0%	0.00 in.	47 knots	S (191)
D5	47 dBZ	5,000 ft.	4 kg/m <sup>2</sup>	0%	0%	0.00 in.	50 knots	SW (214)
I4	47 dBZ	6,000 ft.	2 kg/m <sup>2</sup>	0%	0%	0.00 in.	66 knots	SSW (205)
P5	39 dBZ	5,000 ft.	1 kg/m <sup>2</sup>	0%	0%	0.00 in.	87 knots	SW (227)
J3	36 dBZ	2,000 ft.	0 kg/m <sup>2</sup>	0%	0%	0.00 in.	New Cell	

[- More Information About Storm Data -](#)

### Related Weather Links:

- Change Location: [Map of US Radar Sites](#)
- NEXRAD Assistance: [Radar Frequently Asked Questions \(FAQ\)](#)
- Radar Site: [East Berne, NY Weather Conditions](#)  
[Add East Berne, NY to My Favorites](#)
- Google Maps: [Weather Stations in East Berne, NY](#)



# SAFETY FIRST

- Always make sure you and your family are SAFE first!
- Lightning can get you inside your Shack!
- Report Only when it is SAFE to do so!